



KREMO-WERKE Hermanns GmbH & Co KG

Telefon: + 49 (0) 2151 / 816-0
 Telefax: + 49 (0) 2151 / 81 62 98

Blumentalstr. 141-145
 D - 47798 Krefeld

E-Mail: mail@kremo-werke.de
 Internet: www.kremo-werke.de

Company profile:

KREMO-WERKE Hermanns offers its customers innovative manufacturing solutions for processing and forming of stainless steel, with focus on the stamping-, deep-drawing and stretch projecting technology.

KREMO-WERKE are experts in providing individual solutions, as they are able to manufacture highly complex parts precisely according to the required specification.

A highly qualified professional team and KREMO's modern machinery guarantee the quality of the products manufactured. KREMO's in-house tool shop is equipped with pressing and stamping machines from 25 to up to 2500 tonnes pressure, turning machines, stretch-projected machinery and vacuum annealing unites. Welding department, pickling plant and the in-house acceptance procedure complement the company's service offer.

Manufacturing- / delivery programme:

Pipe fittings:

- Welded and seamless tube reductions
- Welding rim: PN10 and PN16
- Boiler heads
- Copings
- Pipe elbows

- T-pieces
- Brackets und double clamps
- Pipe clips
- Blind gaskets for flange connections
- Flanges

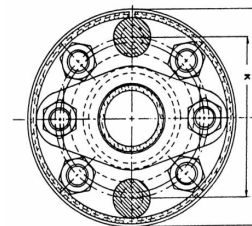
- Jacketed flanges and accessoires
- Sightglass fittings
- Aerated concrete anchoring

Service:

- Various designs and tolerances
- Welding edge preparation
- Welding
- Flanges and flaring
- Factory tests
- Cutting
- Specialty- Glowing business/ Commissioned annealing

Factory tests:

- Identification testing (Spectral analysis)
- Surface crack testing (met I-Check) according to german standard AD2000-Merkblatt HP 4
- Radiographic tests
- PT/ VT



For further information please visit our website www.kremo-werke.de.
 If you have any questions, please do not hesitate to contact us.